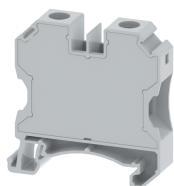


TQC16

Terminal Type - TQC16, Feed-through terminal block, nominal voltage: 1000 V, nominal current: 76 A, connection method: Screw connection, number of connections: 2, cross section: 0.2 mm² - 25 mm², AWG: 24-4 , mounting type: TS 35/7.5, TS 35/15



Approvals



General Information

Product Name	TQC16
Connection Method	Screw Connection
Rating	1000 V/76 A/16 mm ² /2 Nm
HSN Number	8904476701954
Standard Packing Qty(in No)	50
Country Of Origin	India
Screw thread	M5

Dimensions & Weight

Width	12 mm	0.47 inch
Length	53.6 mm	2.11 inch
Height	54.2 mm	2.13 inch
Weight of std. Packing Unit	1.6 Kg	

Material Data

Insulating Material	Polyamide 6,6
Standard Colour	Gray
Colour Variants	Red , Yellow , Blue , Black , Green , Khakhi ,

Rated Conductor Size

Conductor cross section flexible min	0.2 mm ²
Conductor cross section flexible max	16 mm ²
Conductor cross section solid min	0.2 mm ²
Conductor cross section solid max	25 mm ²

Ratings - IEC

Connection in acc. with standard	IEC 60947-7-1
Nominal Voltage U_n	1000 V
Nominal Current I_n	76 A
Nominal cross section	16 mm ²
Short-time current	1.92 kA
Rated surge voltage	8 kV
Degree of pollution	3

Ratings - ATEX

ATEX Standard	EN 60049-7
ATEX Nominal Voltage U_n	500 V
ATEX Nominal Current I_n	73.5 A
ATEX Cross Sec. Flexible Max.	16 mm ²

Ratings - CSA

CSA Standard	
B - CSA Nominal Voltage U_N	V
B - CSA Nominal Current I_N	A
B - CSA Wire Min	AWG
B - CSA Wire Max	AWG

Ratings - UL

UL Standard	UL 1059
B - UL Nominal Voltage U_N	600 V
B - UL Nominal Current I_N	85 A
B - UL Wire Min	24 AWG
B - UL Wire Max	4 AWG