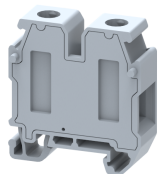


## SUT10

Terminal Type - SUT10, Mini and Micro feed through terminal block, nominal voltage: 500 V, nominal current: 57 A, Rated cross-section - 10 mm<sup>2</sup>, connection method: Screw connection, number of connections: 2, cross-section: 0.2 mm<sup>2</sup> - 10 mm<sup>2</sup>, AWG: 24 - 8, mounting type: TS15



### Approvals



### General Information

Product Name	SUT10
Connection Method	Screw Connection
Rating	500 V/57 A/10 mm <sup>2</sup> /0.80 Nm
HSN Number	85389000
Standard Packing Qty(in No)	100
Country Of Origin	India
Screw thread	M3.5

### Dimensions & Weight

Width	10 mm	0.39 inch
Length	31.7 mm	1.25 inch
Height	33.8 mm	1.33 inch
Weight of std. Packing Unit	1.25 Kg	

### Material Data

Insulating Material	Polyamide 6,6
Standard Colour	Gray
Colour Variants	Red , Yellow , Blue , Black , Green , Khakhi ,

### Rated Conductor Size

Conductor cross section flexible min	0.2 mm <sup>2</sup>
Conductor cross section flexible max	10 mm <sup>2</sup>
Conductor cross section solid min	0.2 mm <sup>2</sup>
Conductor cross section solid max	10 mm <sup>2</sup>

## Ratings - IEC

Connection in acc. with standard	IEC 60947-7-1
Nominal Voltage $U_n$	500 V
Nominal Current $I_n$	57 A
Nominal cross section	10 mm <sup>2</sup>
Short-time current	1.2 kA
Rated surge voltage	6 kV
Degree of pollution	3

