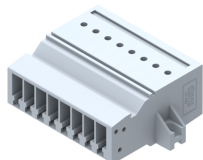


PQPP2.5M-HM8W

Socket Type - PQPP2.5M-HM8W , nominal voltage: 500V, nominal current: 24 A, connection method: Push-in connection, number of connections: 8, number of positions: 8, cross section: 0.08 mm² - 4 mm², AWG : 24-12, mounting type: Panel mounting / Surface mounting (Horizontal type)



Approvals



General Information

Product Name	PQPP2.5M-HM8W
Connection Method	Push In Connection
Rating	500 V/24 A/2.5 mm ² /NAP Nm
HSN Number	8904476705259
Standard Packing Qty(in No)	100
Country Of Origin	India
Screw thread	NAP

Dimensions & Weight

Width	55.5 mm	2.19 inch
Length	18.8 mm	0.74 inch
Height	38 mm	1.5 inch
Weight of std. Packing Unit	2.93 Kg	

Material Data

Insulating Material	Polyamide 6,6
Standard Colour	Gray
Colour Variants	Red , Yellow , Blue , Black , Green , Khakhi ,

Rated Conductor Size

Conductor cross section flexible min	0.14 mm ²
Conductor cross section flexible max	2.5 mm ²
Conductor cross section solid min	0.08 mm ²
Conductor cross section solid max	4 mm ²

Ratings - IEC

Connection in acc. with standard	IEC 60947-7-1
Nominal Voltage U_n	500 V
Nominal Current I_n	24 A
Nominal cross section	2.5 mm ²
Short-time current	0.3 kA
Rated surge voltage	8 kV
Degree of pollution	3

