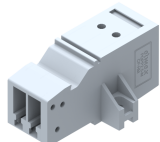


PQPP2.5M-HM2W

Socket Type - PQPP2.5M-HM2W , nominal voltage: 500V, nominal current: 24 A, connection method: Push-in connection, number of connections: 2, number of positions: 2, cross section: 0.08 mm² - 4 mm², AWG : 24-12, mounting type: Panel mounting / Surface mounting (Horizontal type)



Approvals



General Information

Product Name	PQPP2.5M-HM2W
Connection Method	Push In Connection
Rating	500 V/24 A/2.5 mm ² /NAP Nm
HSN Number	8904476705235
Standard Packing Qty(in No)	100
Country Of Origin	India
Screw thread	NAP

Dimensions & Weight

Width	25.5 mm	1 inch
Length	18.8 mm	0.74 inch
Height	38 mm	1.5 inch
Weight of std. Packing Unit	0.69 Kg	

Material Data

Insulating Material	Polyamide 6,6
Standard Colour	Gray
Colour Variants	Red , Yellow , Blue , Black , Green , Khakhi ,

Rated Conductor Size

Conductor cross section flexible min	0.14 mm ²
Conductor cross section flexible max	2.5 mm ²
Conductor cross section solid min	0.08 mm ²
Conductor cross section solid max	4 mm ²

Ratings - IEC

Connection in acc. with standard	IEC 60947-7-1
Nominal Voltage U_n	500 V
Nominal Current I_n	24 A
Nominal cross section	2.5 mm ²
Short-time current	0.3 kA
Rated surge voltage	8 kV
Degree of pollution	3

