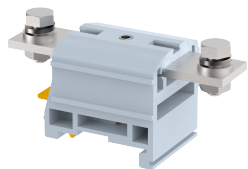


DPBB50

Terminal Type - DPBB50, High current connectors, nominal voltage: 1000 V, nominal current: 150 A, Rated cross-section - 50 mm², connection method: Bolt connection, number of connections: 2, cross-section: 10 mm² - 50 mm², AWG: 6 - 1 , mounting type: TS 35/7.5, TS 35/15 , TS 32



Approvals



General Information

Product Name	DPBB50
Connection Method	Bolt Connection
Rating	1000 V/150 A/50 mm ² /3 Nm
HSN Number	8904476703873
Standard Packing Qty(in No)	10
Country Of Origin	India
Screw thread	M6

Dimensions & Weight

Width	37.2 mm	1.46 inch
Length	85 mm	3.35 inch
Height	42.9 mm	1.69 inch
Weight of std. Packing Unit	0.89 Kg	

Material Data

Insulating Material	Polyamide 6,6
Standard Colour	Gray
Colour Variants	Red , Yellow , Blue , Black , Green , Khakhi , Gray ,

Rated Conductor Size

Conductor cross section flexible min	10 mm ²
Conductor cross section flexible max	50 mm ²
Conductor cross section solid min	10 mm ²
Conductor cross section solid max	50 mm ²

Ratings - IEC

Connection in acc. with standard	IEC 60947-7-1
Nominal Voltage U_n	1000 V
Nominal Current I_n	150 A
Nominal cross section	50 mm ²
Short-time current	6 kA
Rated surge voltage	12 kV
Degree of pollution	3

Ratings - ATEX

ATEX Standard	EN 60079-7
ATEX Nominal Voltage U_n	1000 V
ATEX Nominal Current I_n	150 A
ATEX Cross Sec. Flexible Max.	50 mm ²

Ratings - CSA

CSA Standard	CSA C22.2 NO 158
B - CSA Nominal Voltage U_N	1000 V
B - CSA Nominal Current I_N	130 A
B - CSA Wire Min	6 AWG
B - CSA Wire Max	1 AWG

Ratings - UL

UL Standard	UL 1059
B - UL Nominal Voltage U_N	1000 V
B - UL Nominal Current I_N	130 A
B - UL Wire Min	6 AWG
B - UL Wire Max	1 AWG