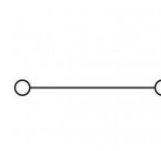
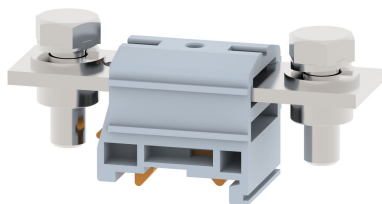


## DPBB120CN

Terminal Type - DPBB120CN , High Current connectors , nominal voltage: 1000 V, nominal current: 269 A, connection method: Bolt connection with clinch nut, Rated Cross Section:- 120 , number of connections: 2, cross section: 25 mm<sup>2</sup> - 120 mm<sup>2</sup> , mounting type: TS 35/7.5, TS 35/15 , TS 32



### Approvals



### General Information

Product Name	DPBB120CN
Connection Method	Bolt Connection
Rating	1000 V/269 A/120 mm <sup>2</sup> /6 Nm
HSN Number	85389000
Standard Packing Qty(in No)	10
Country Of Origin	India
Screw thread	M10

### Dimensions & Weight

Width	37 mm	1.46 inch
Length	100 mm	3.94 inch
Height	46.2 mm	1.82 inch
Weight of std. Packing Unit	1.59 Kg	

### Material Data

Insulating Material	Polyamide 6,6
Standard Colour	Gray
Colour Variants	Red , Yellow , Blue , Black , Green , Khakhi ,

### Rated Conductor Size

Conductor cross section flexible min	25 mm <sup>2</sup>
Conductor cross section flexible max	120 mm <sup>2</sup>
Conductor cross section solid min	25 mm <sup>2</sup>
Conductor cross section solid max	120 mm <sup>2</sup>

**Ratings - IEC**

Connection in acc. with standard	IEC 60947-7-1
Nominal Voltage $U_n$	1000 V
Nominal Current $I_n$	269 A
Nominal cross section	120 mm <sup>2</sup>
Short-time current	14.40 kA
Rated surge voltage	12 kV
Degree of pollution	3

