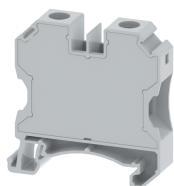


TQC16

Terminal Type - TQC16, Feed-through terminal block, nominal voltage: 1000 V, nominal current: 76 A, connection method: Screw connection, number of connections: 2, cross section: 0.2 mm² - 25 mm², AWG: 24-4 , mounting type: TS 35/7.5, TS 35/15



Approvals



General Information

Product Name	TQC16
Connection Method	Screw Connection
Rating	1000 V / 76 A / 16 mm ² / 2 Nm
HSN Number	8904476701954
Standard Packing Qty (in No)	50
Country Of Origin	India
Screw thread	M5

Dimensions & Weight

Width	12 mm	0.47 inch
Length	53.6 mm	2.11 inch
Height	54.2 mm	2.13 inch
Weight of std. Packing Unit	1.6 Kg	

Material Data

Insulating Material	Polyamide 6,6
Standard Colour	Gray
Colour Variants	Red, Yellow, Blue, Black, Green, Khakhi

Rated Conductor Size

Conductor cross section flexible min	0.2 mm ²
Conductor cross section flexible max	16 mm ²
Conductor cross section solid min	0.2 mm ²
Conductor cross section solid max	25 mm ²

Rated Conductor Size

Conductor cross section flexible min	0.2 mm ²
Conductor cross section flexible max	16 mm ²
Conductor cross section solid min	0.2 mm ²

Conductor cross section solid max	25 mm ²
-----------------------------------	--------------------

Ratings - ATEX

ATEX Standard	EN 60049-7
ATEX Nominal Voltage U _n	500 V
ATEX Nominal Current I _n	73.5 A
ATEX Cross Sec. Flexible Max.	16 mm ²

Ratings - UL



UL Standard	UL 1059
B - UL Nominal Voltage U _N	600 V
B - UL Nominal Current I _N	85 A
B - UL Wire Min	24 AWG
B - UL Wire Max	4 AWG

Product Accessories

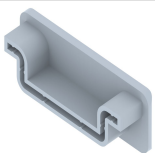
DIN Rail Perforated

CHKDS	Height : 15.00 mm Width : 35.00 mm Thickness : 1.50 mm Length : 2,000.00 mm	
CHKS	Height : 7.50 mm Width : 35.00 mm Thickness : 1.00 mm	

DIN Rail, Unperforated

CHKD	Height : 15.00 mm Width : 35.00 mm Thickness : 1.50 mm	
CHK	Height : 7.50 mm Width : 35.00 mm Thickness : 1.00 mm	

End Cap

CHKENDCAP	Height : 14.00 mm Width : 9.00 mm Length : 41.50 mm	
-----------	---	---

End Clamp

SCUP	Height : 34.00 mm Width : 9.00 mm Length : 44.75 mm	
------	---	---

End Clamp		
SCEC35	Height : 31.50 mm Width : 8.00 mm Length : 45.80 mm	
SCUSL	Height : 41.10 mm Width : 8.00 mm Length : 47.50 mm	
SCUDD	Height : 50.00 mm Width : 10.00 mm Length : 55.60 mm	
DCKN	Height : 33.00 mm Width : 6.00 mm Length : 43.50 mm	
DCKN10	Height : 35.00 mm Width : 10.00 mm Length : 43.50 mm	
SCKN	Height : 34.50 mm Width : 8.00 mm Length : 44.90 mm	
SCUN	Height : 35.50 mm Width : 9.50 mm Length : 50.60 mm	
Marker For Terminal Blocks		
LABEL KN12	Height : 2.43 mm Width : 12.00 mm Length : 8.50 mm	
Pick-off Terminal Block		
TQCPT4	Height : 28.20 mm Width : 8.00 mm Pitch : 8.00 mm Length : 40.25 mm	
Plug-in Bridge/Jumper		
MLPU12-2W	Height : 28.65 mm Width : 5.00 mm Pitch : 12.00 mm Length : 23.00 mm	

Marker carriers		
SCUDDMLH	Height : 71.50 mm Width : 11.00 mm Length : 55.60 mm	
SCUNMLH	Height : 53.50 mm Width : 11.00 mm Length : 50.60 mm	
DCKNMLH	Height : 45.00 mm Width : 10.00 mm Length : 43.50 mm	
SCKNMLH	Height : 42.00 mm Width : 16.00 mm Length : 44.70 mm	

