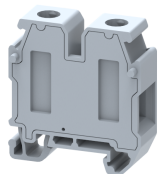


SUT10

Terminal Type - SUT10, Mini and Micro feed through terminal block, nominal voltage: 500 V, nominal current: 57 A, Rated cross-section - 10 mm², connection method: Screw connection, number of connections: 2, cross-section: 0.2 mm² - 10 mm², AWG: 24 - 8, mounting type: TS15



Approvals



General Information

Product Name	SUT10
Connection Method	Screw Connection
Rating	500 V / 57 A / 10 mm ² / 0.80 Nm
HSN Number	85389000
Standard Packing Qty (in No)	100
Country Of Origin	India
Screw thread	M3.5

Dimensions & Weight

Width	10 mm	0.39 inch
Length	31.7 mm	1.25 inch
Height	33.8 mm	1.33 inch
Weight of std. Packing Unit	1.25 Kg	

Material Data

Insulating Material	Polyamide 6,6
Standard Colour	Gray
Colour Variants	Red, Yellow, Blue, Black, Green, Khakhi

Rated Conductor Size

Conductor cross section flexible min	0.2 mm ²
Conductor cross section flexible max	10 mm ²
Conductor cross section solid min	0.2 mm ²
Conductor cross section solid max	10 mm ²

Rated Conductor Size

Conductor cross section flexible min	0.2 mm ²
Conductor cross section flexible max	10 mm ²

Conductor cross section solid min	0.2 mm ²
Conductor cross section solid max	10 mm ²

Product Accessories

DIN Rail Perforated

CHM	Height : 5.00 mm Width : 15.00 mm Thickness : 1.00 mm	
-----	---	---

End Clamp

SCMN	Height : 18.00 mm Width : 6.10 mm Length : 23.50 mm	
------	---	---

Marker For Terminal Blocks

LABEL KN10	Height : 2.89 mm Width : 10.00 mm Length : 8.50 mm	
------------	--	---

Partition Plate

MBX	Height : 36.70 mm Width : 1.50 mm Length : 43.50 mm	
-----	---	---

Plug-in Bridge/Jumper

MLPU10-2W	Height : 23.17 mm Width : 2.75 mm Pitch : 10.00 mm Length : 17.50 mm	
MLPU10-3W	Height : 23.17 mm Width : 2.75 mm Pitch : 10.00 mm Length : 27.50 mm	
MLPU10-4W	Height : 23.17 mm Width : 2.75 mm Pitch : 10.00 mm Length : 37.50 mm	
MLPU10-5W	Height : 23.17 mm Width : 2.75 mm Pitch : 10.00 mm Length : 47.50 mm	