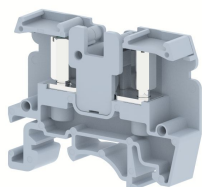


ONTM3-6C

Terminal Type - ONTM3-6C , Feed Through Terminal Block , nominal voltage: 1000 V, nominal current: 41 A, connection method : Bolt Connection - Screw and Nut driver operated, number of connections: 2, Rated Cross-section : 6 mm² , cross section: 0.5 mm² - 6 mm², mounting type: TS 35/7.5, TS 35/15 , TS 32



Approvals



General Information

Product Name	ONTM3-6C
Connection Method	Bolt Connection
Rating	1000 V / 41 A / 6 mm ² / 0.5 Nm
HSN Number	85389000
Standard Packing Qty (in No)	100
Country Of Origin	India
Screw thread	M3

Dimensions & Weight

Width	9 mm	0.35 inch
Length	48 mm	1.89 inch
Height	36.5 mm	1.44 inch
Weight of std. Packing Unit	1.3 Kg	

Material Data

Insulating Material	Polyamide 6,6
Standard Colour	Gray
Colour Variants	Red, Yellow, Blue, Black, Green, Khakhi

Rated Conductor Size

Conductor cross section flexible min	0.5 mm ²
Conductor cross section flexible max	6 mm ²
Conductor cross section solid min	0.5 mm ²
Conductor cross section solid max	6 mm ²


Rated Conductor Size



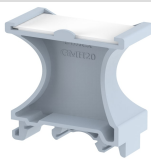
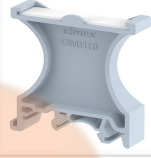
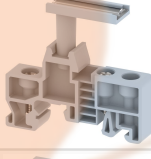
Conductor cross section flexible min	0.5 mm ²
Conductor cross section flexible max	6 mm ²

Conductor cross section solid min	0.5 mm ²
Conductor cross section solid max	6 mm ²

Product Accessories

DIN Rail Perforated		
CHKDS	Height : 15.00 mm Width : 35.00 mm Thickness : 1.50 mm Length : 2,000.00 mm	
CHKS	Height : 7.50 mm Width : 35.00 mm Thickness : 1.00 mm	
CHS	Height : 15.00 mm Width : 32.00 mm Thickness : 1.50 mm	
DIN Rail, Unperforated		
CHKD	Height : 15.00 mm Width : 35.00 mm Thickness : 1.50 mm	
CHK	Height : 7.50 mm Width : 35.00 mm Thickness : 1.00 mm	
End Cap		
CHKENDCAP	Height : 14.00 mm Width : 9.00 mm Length : 41.50 mm	
End Clamp		
SCUP	Height : 34.00 mm Width : 9.00 mm Length : 44.75 mm	
SCEC35	Height : 31.50 mm Width : 8.00 mm Length : 45.80 mm	
SCUDD	Height : 50.00 mm Width : 10.00 mm Length : 55.60 mm	

End Clamp		
SCUSL	Height : 41.10 mm Width : 8.00 mm Length : 47.50 mm	
DCKN	Height : 33.00 mm Width : 6.00 mm Length : 43.50 mm	
DCKN10	Height : 35.00 mm Width : 10.00 mm Length : 43.50 mm	
SCKN	Height : 34.50 mm Width : 8.00 mm Length : 44.90 mm	
SCUN	Height : 35.50 mm Width : 9.50 mm Length : 50.60 mm	
End Cover		
ONTEP	Height : 22.80 mm Width : 2.00 mm Length : 47.80 mm	
Fixed Bridge		
CCLAONT9-2W	Height : 18.30 mm Width : 4.80 mm Pitch : 9.00 mm Length : 13.80 mm	
CCLAONT9-10W	Height : 18.30 mm Width : 4.80 mm Pitch : 9.00 mm Length : 85.20 mm	
CCLAONT9-3W	Height : 18.30 mm Width : 4.80 mm Pitch : 9.00 mm Length : 22.80 mm	
CCLAONT9-4W	Height : 18.30 mm Width : 4.80 mm Pitch : 9.00 mm Length : 31.20 mm	
CCLAONT9-5W	Height : 18.30 mm Width : 4.80 mm Pitch : 9.00 mm Length : 40.80 mm	

Marker For Terminal Blocks		
ONTML9	Height : 2.42 mm Width : 9.00 mm Length : 11.50 mm	
Partition Plate		
KBXF	Height : 53.40 mm Width : 1.50 mm Length : 54.00 mm	
Marker carriers		
GMH20	Height : 51.00 mm Width : 20.00 mm Length : 42.25 mm	
GMH10	Height : 51.00 mm Width : 10.00 mm Length : 42.25 mm	
SCUNMLH	Height : 53.50 mm Width : 11.00 mm Length : 50.60 mm	
SCKNMLH	Height : 42.00 mm Width : 16.00 mm Length : 44.70 mm	