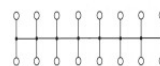
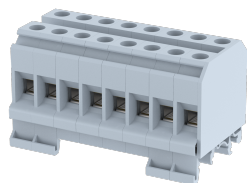


DBK8

Terminal Type - DBK8 , Distribution Block, nominal voltage: 800 V, nominal current: 57 A, Rated cross-section - IC-10 mm²/OG-10 mm², connection method: Screw connection, number of connections: 16, cross-section: 2.5 mm² - 16 mm², AWG:16-6 , mounting type: TS 35/7.5, TS 35/15 , TS 32



Approvals



General Information

Product Name	DBK8
Connection Method	Screw Connection
Rating	800 V / 57 A / IC - 10 , OG - 10 mm ² / 1.2 Nm
HSN Number	85389000
Standard Packing Qty (in No)	10
Country Of Origin	India
Screw thread	M4

Dimensions & Weight

Width	81.84 mm	3.22 inch
Length	42.5 mm	1.67 inch
Height	46.4 mm	1.83 inch
Weight of std. Packing Unit	1.6 Kg	

Material Data

Insulating Material	Polyamide 6,6
Standard Colour	Gray
Colour Variants	Red, Yellow, Blue, Black, Green, Khakhi, Gray

Rated Conductor Size

Conductor cross section flexible min	2.5 mm ²
Conductor cross section flexible max	10 mm ²
Conductor cross section solid min	2.5 mm ²
Conductor cross section solid max	16 mm ²

Rated Conductor Size

Conductor cross section flexible min	2.5 mm ²
Conductor cross section flexible max	10 mm ²

Conductor cross section solid min	2.5 mm ²
Conductor cross section solid max	16 mm ²

Ratings - UL

UL Standard	UL 1059
B - UL Nominal Voltage U _N	600 V
B - UL Nominal Current I _N	65 A
B - UL Wire Min	16 AWG
B - UL Wire Max	6 AWG

Product Accessories

Cover Profile


PCK3	Height : 28.00 mm Width : 58.35 mm Thickness : 1.00 mm	
------	--	---

Cover Profile Carrier

UHDD	Height : 74.50 mm Thickness : 2.00 mm Length : 55.82 mm	
------	---	--

DIN Rail Perforated

CHKDS	Height : 15.00 mm Width : 35.00 mm Thickness : 1.50 mm Length : 2,000.00 mm	
-------	--	---

CHKS	Height : 7.50 mm Width : 35.00 mm Thickness : 1.00 mm	
------	---	---

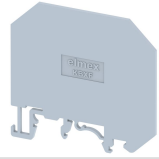

CHS	Height : 15.00 mm Width : 32.00 mm Thickness : 1.50 mm	
-----	--	---

DIN Rail, Unperforated

CHKD	Height : 15.00 mm Width : 35.00 mm Thickness : 1.50 mm	
------	--	---

CHK	Height : 7.50 mm Width : 35.00 mm Thickness : 1.00 mm	
-----	---	---

End Cap		
CHKENDCAP	Height : 14.00 mm Width : 9.00 mm Length : 41.50 mm	
End Clamp		
SCUP	Height : 34.00 mm Width : 9.00 mm Length : 44.75 mm	
SCEC35	Height : 31.50 mm Width : 8.00 mm Length : 45.80 mm	
SCUSL	Height : 41.10 mm Width : 8.00 mm Length : 47.50 mm	
SCUDD	Height : 50.00 mm Width : 10.00 mm Length : 55.60 mm	
DCKN	Height : 33.00 mm Width : 6.00 mm Length : 43.50 mm	
DCKN10	Height : 35.00 mm Width : 10.00 mm Length : 43.50 mm	
SCKN	Height : 34.50 mm Width : 8.00 mm Length : 44.90 mm	
SCUN	Height : 35.50 mm Width : 9.50 mm Length : 50.60 mm	
Marker For Terminal Blocks		
LABEL KN10	Height : 2.89 mm Width : 10.00 mm Length : 8.50 mm	

Partition Plate		
KBXF	Height : 53.40 mm Width : 1.50 mm Length : 54.00 mm	
KBX	Height : 43.00 mm Width : 1.50 mm Length : 54.00 mm	

Marker carriers		
SCUDDMLH	Height : 71.50 mm Width : 11.00 mm Length : 55.60 mm	
SCUNMLH	Height : 53.50 mm Width : 11.00 mm Length : 50.60 mm	
DCKNMLH	Height : 45.00 mm Width : 10.00 mm Length : 43.50 mm	
SCKNMLH	Height : 42.00 mm Width : 16.00 mm Length : 44.70 mm	