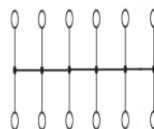
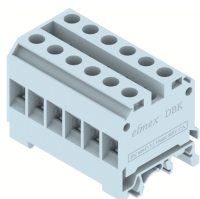


## DBK6

Terminal Type - DBK6 , Distribution Block, nominal voltage: 800 V, nominal current: 57 A, connection method: Screw connection, number of connections: 12 , Rated cross section: IC - 10 mm<sup>2</sup> , OG - 10 mm<sup>2</sup>, cross section: 2.5 mm<sup>2</sup> - 16 mm<sup>2</sup> , mounting type: TS 35/7.5, TS 35/15 , TS 32



### Approvals



### General Information

Product Name	DBK6
Connection Method	Screw Connection
Rating	800 V / 57 A / IC - 10 mm <sup>2</sup> , OG - 10 mm <sup>2</sup> / 1.2 Nm
HSN Number	85389000
Standard Packing Qty (in No)	10
Country Of Origin	India
Screw thread	M4

### Dimensions & Weight

Width	61.5 mm	2.42 inch
Length	42.5 mm	1.67 inch
Height	46.4 mm	1.83 inch
Weight of std. Packing Unit	1.17 Kg	

### Material Data

Insulating Material	Polyamide 6,6
Standard Colour	Gray
Colour Variants	Red, Yellow, Blue, Black, Green, Khakhi

### Rated Conductor Size

Conductor cross section flexible min	2.5 mm <sup>2</sup>
Conductor cross section flexible max	10 mm <sup>2</sup>
Conductor cross section solid min	2.5 mm <sup>2</sup>
Conductor cross section solid max	16 mm <sup>2</sup>

### Rated Conductor Size

Conductor cross section flexible min	2.5 mm <sup>2</sup>
Conductor cross section flexible max	10 mm <sup>2</sup>

Conductor cross section solid min	2.5 mm <sup>2</sup>
Conductor cross section solid max	16 mm <sup>2</sup>

**Product Accessories**

**Cover Profile**

PCK3	Height : 28.00 mm Width : 58.35 mm Thickness : 1.00 mm	
------	--	---



**Cover Profile Carrier**

UHDD	Height : 74.50 mm Thickness : 2.00 mm Length : 55.82 mm	
------	---	---

**DIN Rail Perforated**

CHKDS	Height : 15.00 mm Width : 35.00 mm Thickness : 1.50 mm Length : 2,000.00 mm	
CHKS	Height : 7.50 mm Width : 35.00 mm Thickness : 1.00 mm	
CHS	Height : 15.00 mm Width : 32.00 mm Thickness : 1.50 mm	

**DIN Rail, Unperforated**

CHKD	Height : 15.00 mm Width : 35.00 mm Thickness : 1.50 mm	
CHK	Height : 7.50 mm Width : 35.00 mm Thickness : 1.00 mm	

**End Cap**

CHKENDCAP	Height : 14.00 mm Width : 9.00 mm Length : 41.50 mm	
-----------	---	---

**End Clamp**

SCUP	Height : 34.00 mm Width : 9.00 mm Length : 44.75 mm	
------	---	---

<b>End Clamp</b>		
SCUSL	Height : 41.10 mm Width : 8.00 mm Length : 47.50 mm	
SCUDD	Height : 50.00 mm Width : 10.00 mm Length : 55.60 mm	
DCKN	Height : 33.00 mm Width : 6.00 mm Length : 43.50 mm	
DCKN10	Height : 35.00 mm Width : 10.00 mm Length : 43.50 mm	
SCKN	Height : 34.50 mm Width : 8.00 mm Length : 44.90 mm	
SCUN	Height : 35.50 mm Width : 9.50 mm Length : 50.60 mm	
<b>Marker For Terminal Blocks</b>		
LABEL KN10	Height : 2.89 mm Width : 10.00 mm Length : 8.50 mm	
<b>Partition Plate</b>		
KBXF	Height : 53.40 mm Width : 1.50 mm Length : 54.00 mm	
KBX	Height : 43.00 mm Width : 1.50 mm Length : 54.00 mm	
<b>Marker carriers</b>		
SCUDDMLH	Height : 71.50 mm Width : 11.00 mm Length : 55.60 mm	

Marker carriers		
SCUNMLH	Height : 53.50 mm Width : 11.00 mm Length : 50.60 mm	
DCKNMLH	Height : 45.00 mm Width : 10.00 mm Length : 43.50 mm	
SCKNMLH	Height : 42.00 mm Width : 16.00 mm Length : 44.70 mm	