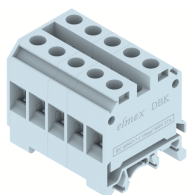


DBK5

Terminal Type - DBK5 , Distribution Block, nominal voltage: 800 V, nominal current: 57 A, connection method: Screw connection, number of connections: 10 , Rated cross section: IC - 10 mm² , OG - 10 mm², cross section: 2.5 mm² - 16 mm², mounting type: TS 35/7.5, TS 35/15 , TS 32



Approvals



General Information

| | |
|------------------------------|---|
| Product Name | DBK5 |
| Connection Method | Screw Connection |
| Rating | 800 V / 57 A / IC - 10 mm ² , OG - 10 mm ² / 1.2 Nm |
| HSN Number | 85389000 |
| Standard Packing Qty (in No) | 20 |
| Country Of Origin | India |
| Screw thread | M4 |

Dimensions & Weight

| | | |
|-----------------------------|---------|-----------|
| Width | 51.6 mm | 2.03 inch |
| Length | 42.5 mm | 1.67 inch |
| Height | 46.4 mm | 1.83 inch |
| Weight of std. Packing Unit | 1.94 Kg | |

Material Data

| | |
|---------------------|---|
| Insulating Material | Polyamide 6,6 |
| Standard Colour | Gray |
| Colour Variants | Red, Yellow, Blue, Black, Green, Khakhi |

Rated Conductor Size

| | |
|--------------------------------------|---------------------|
| Conductor cross section flexible min | 2.5 mm ² |
| Conductor cross section flexible max | 10 mm ² |
| Conductor cross section solid min | 2.5 mm ² |
| Conductor cross section solid max | 16 mm ² |

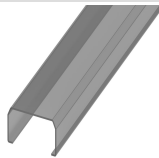
Rated Conductor Size

| | |
|--------------------------------------|---------------------|
| Conductor cross section flexible min | 2.5 mm ² |
| Conductor cross section flexible max | 10 mm ² |

| | |
|-----------------------------------|---------------------|
| Conductor cross section solid min | 2.5 mm ² |
| Conductor cross section solid max | 16 mm ² |

Product Accessories

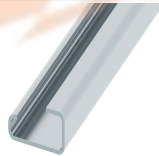
Cover Profile

| | | |
|------|--|---|
| PCK3 | Height : 28.00 mm Width : 58.35 mm Thickness : 1.00 mm |  |
|------|--|---|

Cover Profile Carrier

| | | |
|------|---|---|
| UHDD | Height : 74.50 mm Thickness : 2.00 mm Length : 55.82 mm |  |
|------|---|---|

DIN Rail Perforated

| | | |
|-------|--|---|
| CHKDS | Height : 15.00 mm Width : 35.00 mm Thickness : 1.50 mm Length : 2,000.00 mm |  |
| CHKS | Height : 7.50 mm Width : 35.00 mm Thickness : 1.00 mm |  |
| CHS | Height : 15.00 mm Width : 32.00 mm Thickness : 1.50 mm |  |

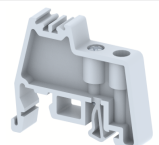
DIN Rail, Unperforated

| | | |
|------|--|---|
| CHKD | Height : 15.00 mm Width : 35.00 mm Thickness : 1.50 mm |  |
| CHK | Height : 7.50 mm Width : 35.00 mm Thickness : 1.00 mm |  |

End Cap

| | | |
|-----------|---|---|
| CHKENDCAP | Height : 14.00 mm Width : 9.00 mm Length : 41.50 mm |  |
|-----------|---|---|

End Clamp

| | | |
|------|---|---|
| SCUP | Height : 34.00 mm Width : 9.00 mm Length : 44.75 mm |  |
|------|---|---|

| End Clamp | | |
|-----------------------------------|--|---|
| SCEC35 | Height : 31.50 mm Width : 8.00 mm Length : 45.80 mm |  |
| SCUSL | Height : 41.10 mm Width : 8.00 mm Length : 47.50 mm |  |
| SCUDD | Height : 50.00 mm Width : 10.00 mm Length : 55.60 mm |  |
| DCKN | Height : 33.00 mm Width : 6.00 mm Length : 43.50 mm |  |
| DCKN10 | Height : 35.00 mm Width : 10.00 mm Length : 43.50 mm |  |
| SCKN | Height : 34.50 mm Width : 8.00 mm Length : 44.90 mm |  |
| SCUN | Height : 35.50 mm Width : 9.50 mm Length : 50.60 mm |  |
| Marker For Terminal Blocks | | |
| LABEL KN10 | Height : 2.89 mm Width : 10.00 mm Length : 8.50 mm |  |
| Partition Plate | | |
| KBXF | Height : 53.40 mm Width : 1.50 mm Length : 54.00 mm |  |
| KBX | Height : 43.00 mm Width : 1.50 mm Length : 54.00 mm |  |

| Marker carriers | | |
|-----------------|--|---|
| SCUDDMLH | Height : 71.50 mm Width : 11.00 mm Length : 55.60 mm |  |
| SCUNMLH | Height : 53.50 mm Width : 11.00 mm Length : 50.60 mm |  |
| DCKNMLH | Height : 45.00 mm Width : 10.00 mm Length : 43.50 mm |  |
| SCKNMLH | Height : 42.00 mm Width : 16.00 mm Length : 44.70 mm |  |

